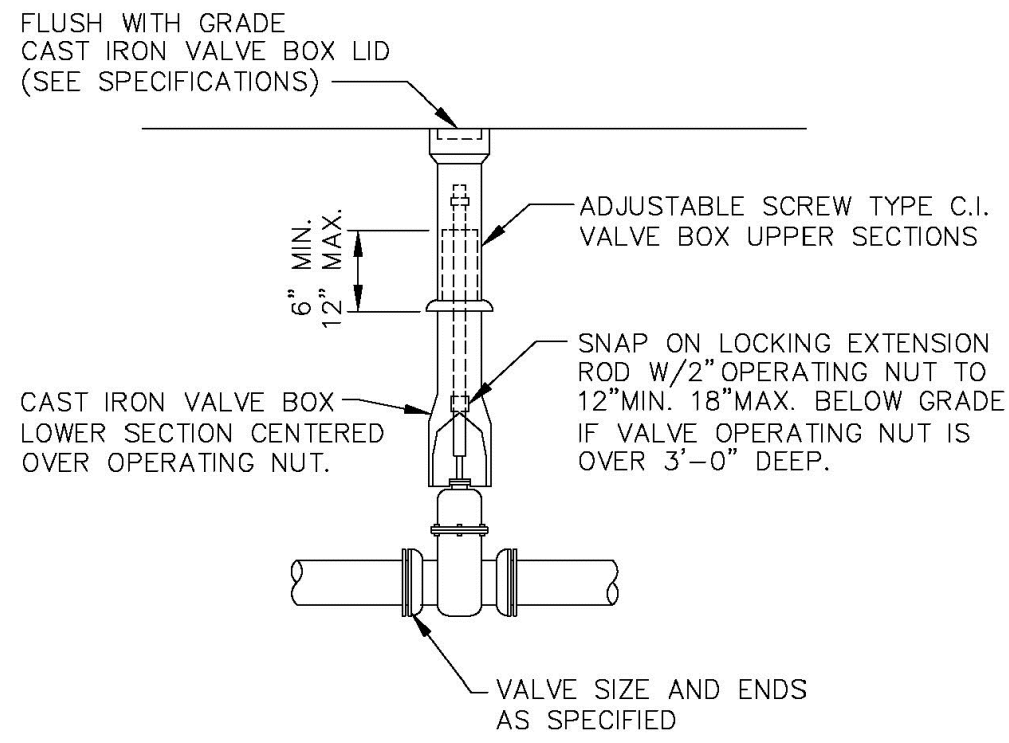


VALVE BOX SETTINGS

ENGINEERING STANDARDS 2025		
REVISIONS	ENGINEERING DIVISION	VALVE BOX SETTINGS
BY DATE	CITY OF POMPANO BEACH	
S.S. 04-2009		DATE: MAY 2022
	SCALE: N.T.S.	DWG. NO. 102-1

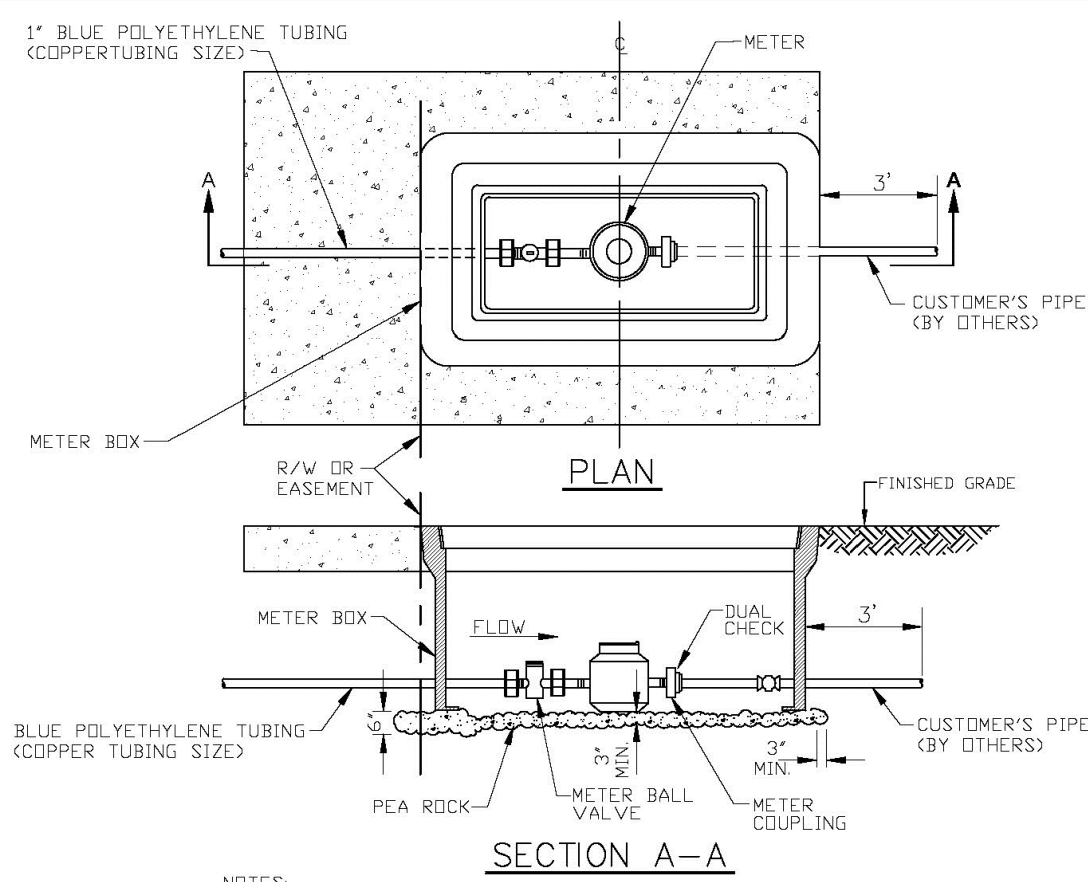


GATE OR PLUG VALVE SETTING

USE MEGALUGS AT ALL PIPE JOINTS

ALL D.I.P. TO BE PAINTED
BLUE ON TOP HALF OF PIPE.

ENGINEERING STANDARDS 2025		
REVISIONS	ENGINEERING DIVISION	GATE OR PLUG VALVE SETTINGS
BY DATE	CITY OF POMPANO BEACH	
S.S. 04-2009		DATE: MAY 2022
T.W. 11-2007	SCALE: N.T.S.	DWG. NO. 103-1

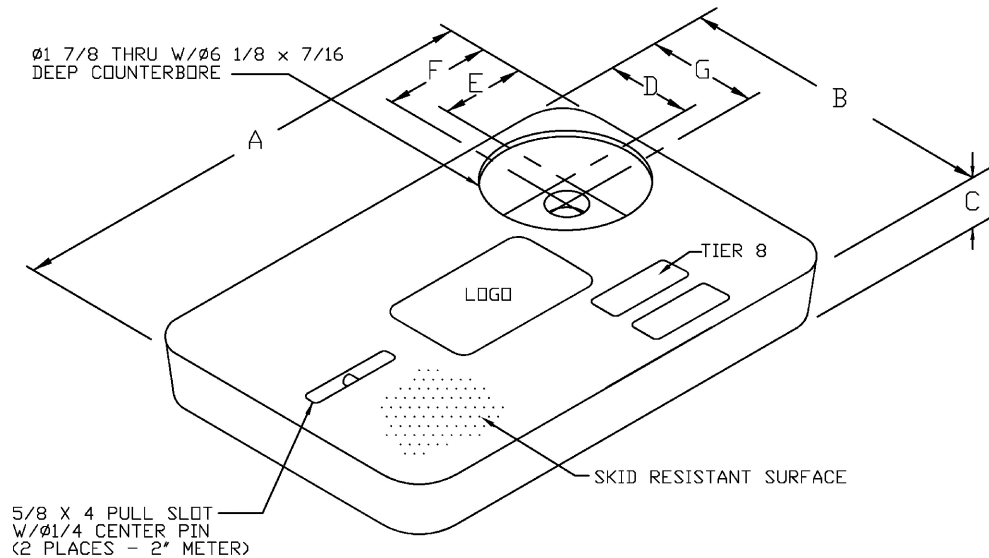


- NOTES:
- ALL METERS WILL BE SUPPLIED AND INSTALLED BY CDPB UTILITIES. METER HAS IRON PIPE THREAD MALE CONNECTION ON EACH END.
 - METER SHALL BE CENTERED IN BOX.
 - DUAL CHECK IS SAME SIZE AS CUSTOMER'S SERVICE LINE.

METER SIZE	LAYING LENGTH (IN)	HEIGHT (IN)
3/4"	7.5	4.56
1"	10.75	5.75

METER BOX INSTALLATION

ENGINEERING STANDARDS 2025		
REVISIONS	ENGINEERING DIVISION	METER BOX INSTALLATION FOR 3/4" AND 1" METERS
BY DATE	CITY OF POMPANO BEACH	
S.S. 11-2012		DATE: JAN. 2022
	SCALE: N.T.S.	DWG. NO. 105-2

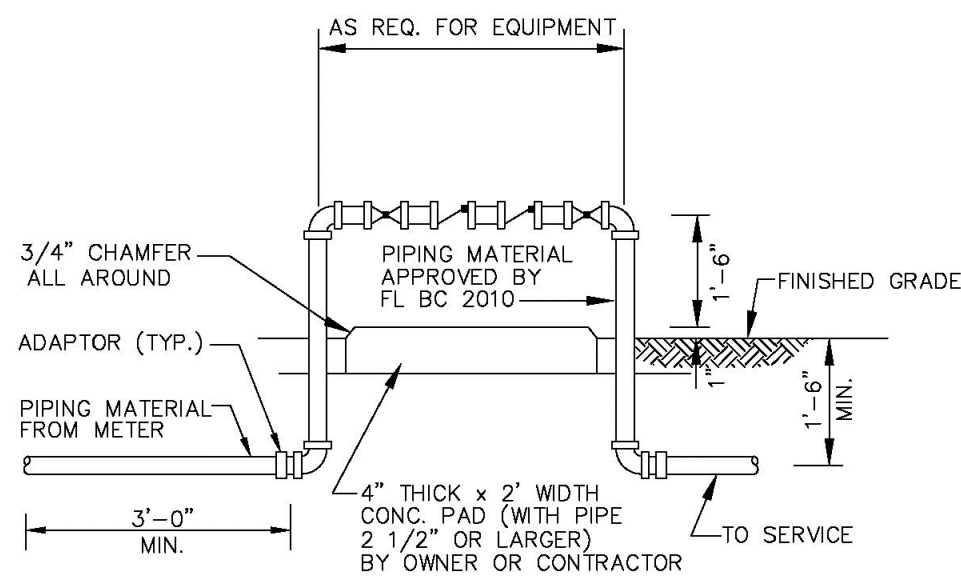


METER BOX COVER DIMENSIONS (IN)							
METER SIZE	A	B	C	D	E	F	G
1"	18 1/8"	11 1/4"	1 3/4"	3 3/4"	4"	4 9/16"	4 5/16"
1 1/2"	23 1/4"	13 3/4"	2"	4"	4"	4 9/16"	4 9/16"
2"	30 1/2"	17 1/2"	2"	4"	4"	4 9/16"	4 9/16"

- NOTES
- CUSTOMER IS CITY OF POMPANO BEACH FLORIDA. LOGO TO BE SPECIFIED CITY OF POMPANO BEACH POTABLE WATER.
 - FITS NEPTUNE R450 ANTENNA.
 - THIS COVER IS RATED FOR A STATIC DESIGN LOAD OF 8,000 LBS. (35,548 N) OVER A 10,024 X 10,024 AREA AND MUST PASS A MINIMUM STATIC TEST LOAD OF 12,000 LBS (53,376 N).
 - METER BOX COVER SHOULD BE RATED FOR TRAFFIC CONDITION AS DETERMINED BY ENGINEER OF RECORD.

POTABLE WATER METER BOX COVER

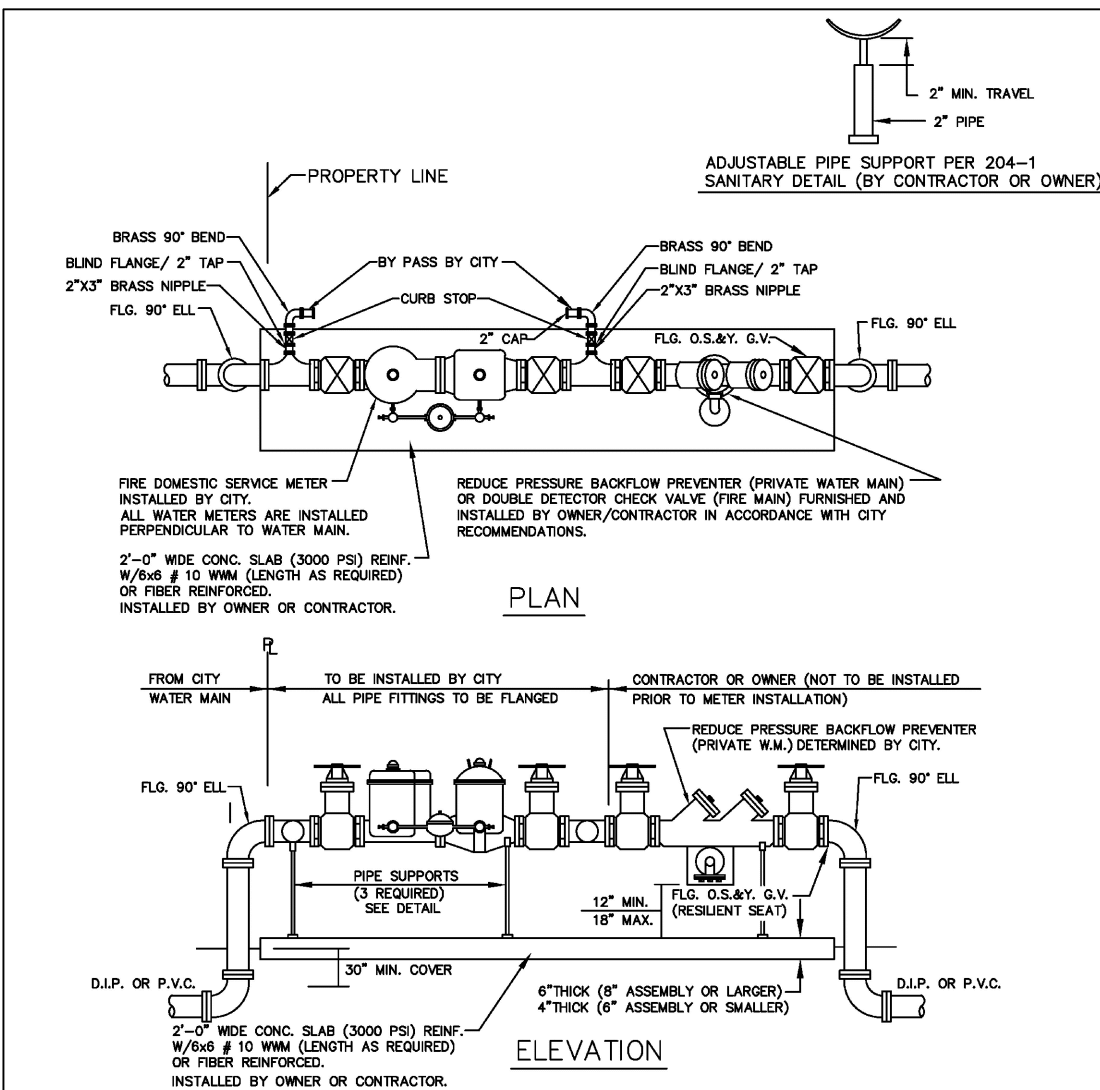
ENGINEERING STANDARDS 2025		
REVISIONS	ENGINEERING DIVISION	TYPICAL METER BOX COVER
BY DATE	CITY OF POMPANO BEACH	
S.S. 11-2012		DATE: JAN. 2022
	SCALE: N.T.S.	DWG. NO. 105-3



BACKFLOW PREVENTER

USE MEGALUGS AT ALL PIPE JOINTS 3" AND LARGER
PLEASE SEE METER INSTALL DIMENSION LIST ON STANDARD NO. 106-4
SMALL UNITS UNI-STRUT SUPPORT

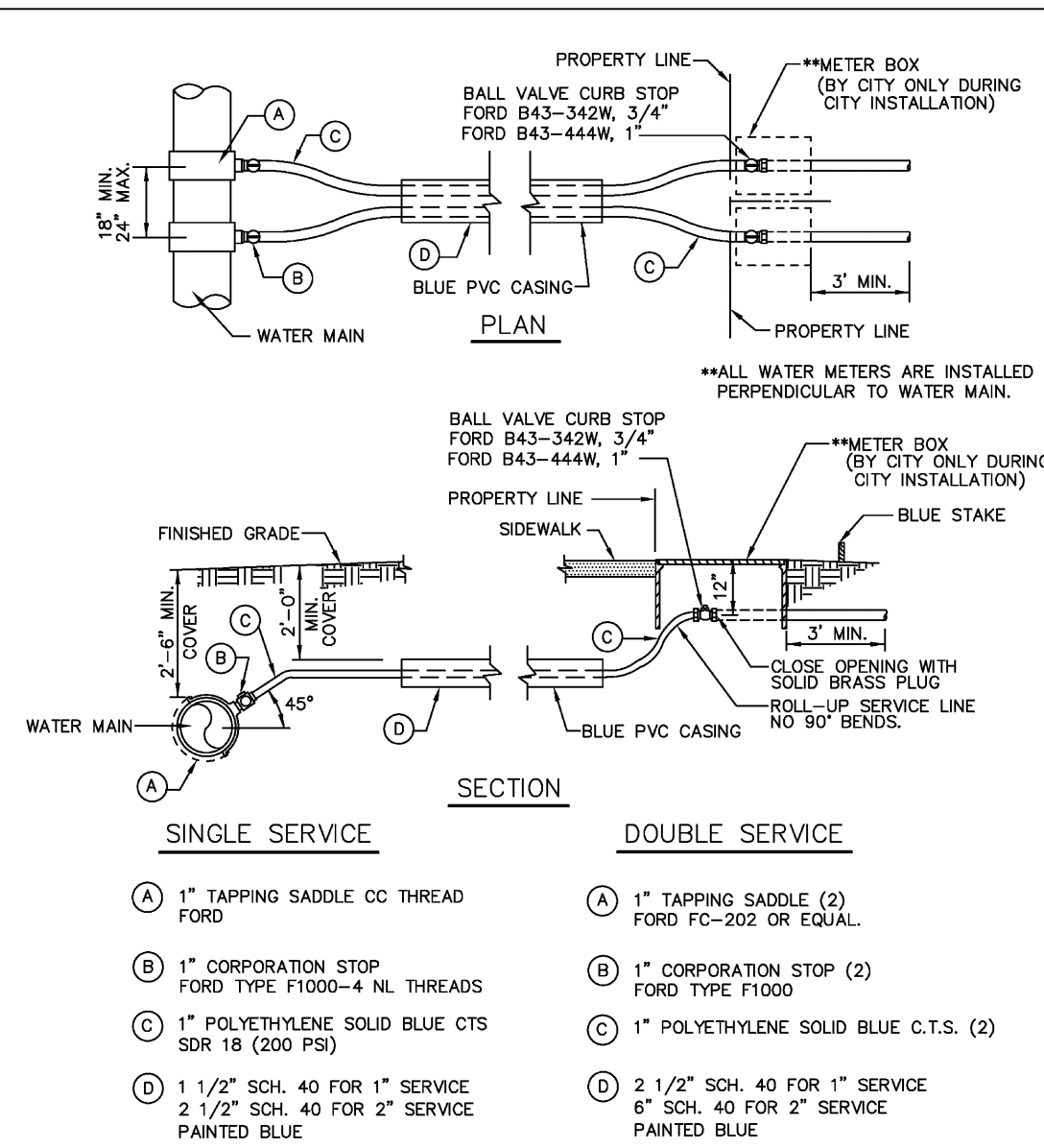
ENGINEERING STANDARDS 2025		
REVISIONS	ENGINEERING DIVISION	BACKFLOW PREVENTER
BY DATE	CITY OF POMPANO BEACH	
T.W. 04-2008		DATE: MAY 2022
S.S. 10-2009		DWG. NO. 106-1
S.S. 11-2012	SCALE: N.T.S.	
S.S. 07-2013		



MASTER METER AND BACKFLOW DEVICE DETAILS FIRE AND DOMESTIC COMBINED SOURCE

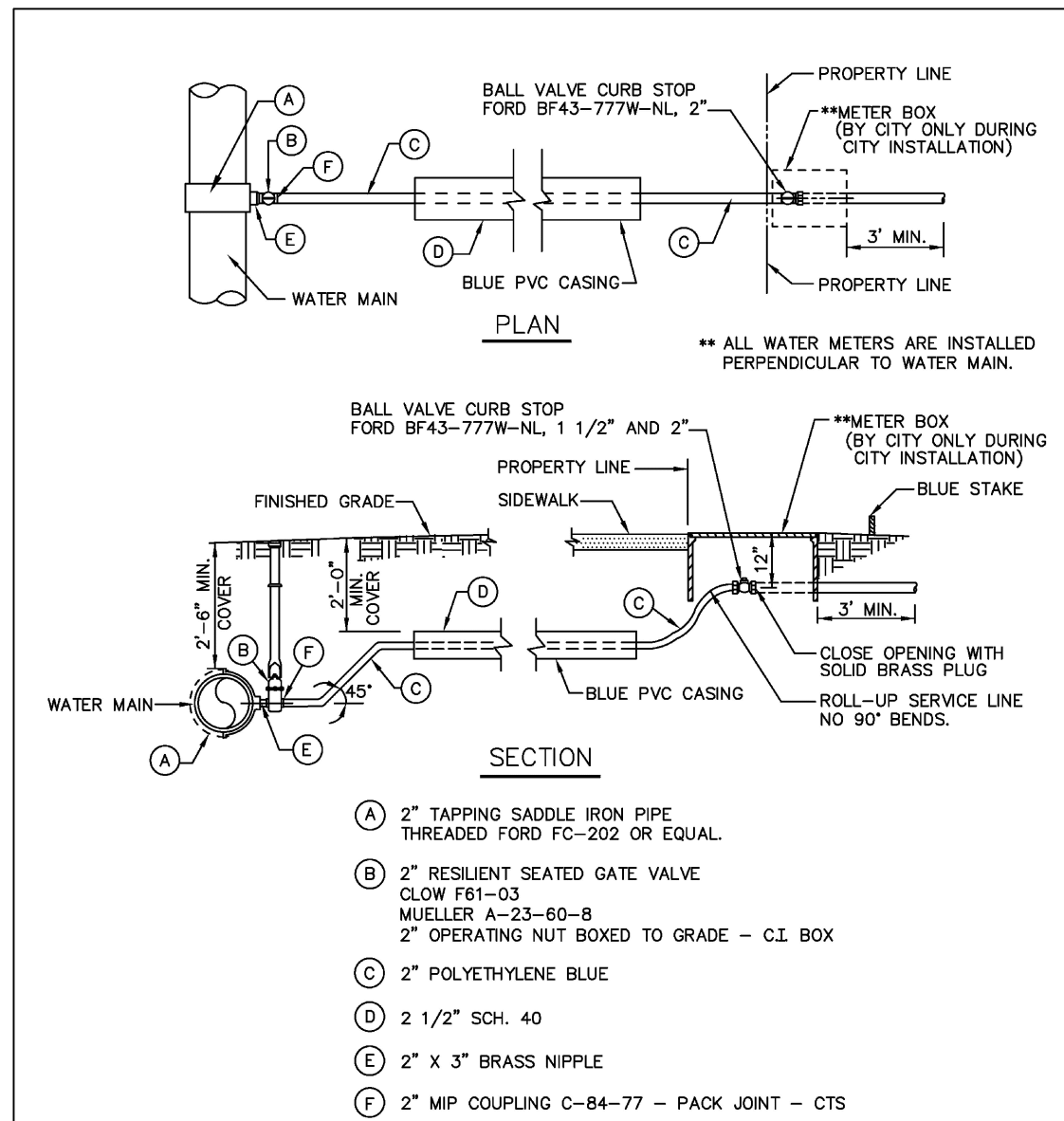
- NOTES
- THE BACKFLOW PREVENTOR FOR THE BY-PASS SHALL BE DCCV OR RP2.
 - PLEASE NOTE THAT WATER METERS 3" AND LARGER ARE SUBJECT TO AN APPROXIMATE ORDER LEAD TIME OF 60 TO 75 DAYS AFTER FULL PAYMENT. PLEASE CONTACT CUSTOMER SERVICE AT 954-786-4637 TO ARRANGE FOR METER PROCUREMENT AND INSTALLATION.
 - USE MEGALUGS AT ALL PIPE JOINTS.
 - PLEASE SEE METER INSTALL DIMENSION LIST ON STANDARD NO. 106-4.

ENGINEERING STANDARDS 2025		
REVISIONS	ENGINEERING DIVISION	MASTER METER AND BACKFLOW DEVICE
BY DATE	CITY OF POMPANO BEACH	
S.S. 05-2011		DATE: MAY 2022
S.S. 11-2012		DWG. NO. 106-2
S.S. 12-2013	SCALE: N.T.S.	
S.S. 11-2016		



TYPICAL 3/4" AND 1" WATER SERVICE

ENGINEERING STANDARDS 2025		
REVISIONS	ENGINEERING DIVISION	TYPICAL 1" WATER SERVICE
BY DATE	CITY OF POMPANO BEACH	
T.W. 11-2007		DATE: MAY 2022
S.S. 05-2012		DWG. NO. 107-1
S.S. 11-2015	SCALE: N.T.S.	
A.S. 08-2021		



TYPICAL 1 1/2" AND 2" WATER SERVICE

ENGINEERING STANDARDS 2025		
REVISIONS	ENGINEERING DIVISION	TYPICAL 2" WATER SERVICE
BY DATE	CITY OF POMPANO BEACH	
S.S. 05-2011		DATE: APRIL 2022
S.S. 05-2012		DWG. NO. 107-2
S.S. 11-2018	SCALE: N.T.S.	
A.S. 08-2021		

DRC

PZ25-12000046
06/03/2026

ATTENTION IS DIRECTED TO THE FACT
THAT THESE PLANS MAY HAVE BEEN
REDUCED IN SIZE BY REPRODUCTION.
THIS MUST BE CONSIDERED WHEN
OBTAINING SCALED DATA.

Sunshine
Call 811 or www.sunshine11.com two full
business days before digging to have utilities
located and marked.
Check positive response codes before you dig!

OWNERS AND USE OF THESE DOCUMENTS AND SPECIFICATIONS ARE WITHIN THE
SERVICE AND SHALL REMAIN THE PROPERTY OF GLOBE ENGINEERING, INC. WHETHER
ON AND OFFER PROJECT OR FOR ADJUSTED TO THE PROJECT BY GLOBE, EXCEPT
BY AGREEMENT IN WRITING BY GLOBE ENGINEERING, INC.
THIS PLAN MAY NOT BE REPRODUCED WITHOUT WRITTEN PERMISSION FROM
2025 - GLOBE ENGINEERING, INC.

TOWNHOMES

3305 SE 5TH STREET
POMPANO BEACH, FL 33062

CITY STANDARD DETAILS

Globe Engineering, Inc.

Civil Engineering - Land Planning - Construction Management

4839 SW 148 Avenue, Suite 507
Fort Lauderdale, FL 33330

Phone: 954-318-7628
www.civil-engineer.us

FBPE REGISTRY No. 8604

THIS ITEM HAS BEEN DIGITALLY SIGNED
AND SEALED BY MARTIN PILOTE USING
A DIGITAL SIGNATURE AND DATE.
PRINTED COPIES OF THIS DOCUMENT
ARE NOT CONSIDERED SIGNED AND
SEALED AND THE SIGNATURE MUST BE
VERIFIED ON ANY ELECTRONIC COPIES.
PRINTED COPIES ARE ONLY VALID IF IT
INCLUDES AN INK ORIGINAL HAND
SIGNATURE.



DESIGNED: MP DATE:
DRAWN: SKC 2/9/2026
PROJECT NO:
2025-011
DRAWING NAME:
C-8
SHEET NO:
C-8 OF 11